



seit 1905

**HERMANN LOHMANN**  
Drahtbiege- und Walztechnik

# Gebogene Schraubhaken

## Crochets d'armoires

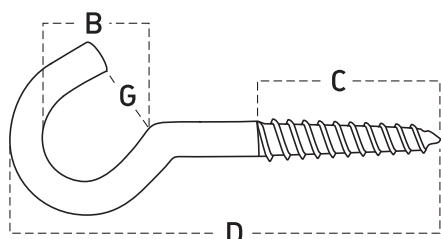
### Cup Hooks



## 011 Gebogene Schraubhaken – mit Holzgewinde

### Crochets d'armoires – filetage bois

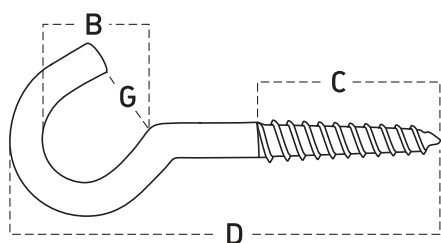
### Cup Hooks – wood thread



Code	Ø mm	B mm	C mm	D mm	G mm		kg 100
------	---------	---------	---------	---------	---------	--	-----------

#### verzinkt - zingué - zinc plated

011.01.02000.1020	11/20	2,0	6	7	20		4	100	0,071
011.01.02500.1020	11/25	2,3	9	7	25		6	100	0,119
011.01.03000.1020	11/30	2,6	10	11	30		6	100	0,173
011.01.04000.1020	11/40	3,0	13	15	40		9	100	0,310
011.01.05000.1020	11/50	3,3	19	18	50		13	100	0,510
011.01.06000.1020	11/60	3,3	19	18	60		14	100	0,550
011.01.07000.1020	11/70	4,2	26	20	70		20	100	1,060
011.01.08000.1020	11/80	4,2	26	24	80		20	100	1,150



Code	Ø mm	B mm	C mm	D mm	G mm		kg 100
------	---------	---------	---------	---------	---------	--	-----------

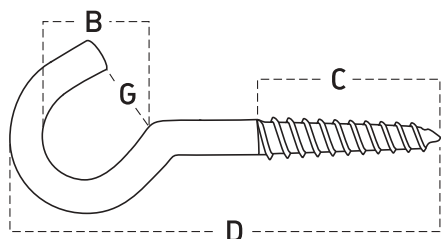
#### rostfrei V2A - inox - stainless


011.01.03000.5015	V2A 11/30	2,8	10	12	30		8	50	0,210
011.01.04000.5015	V2A 11/40	3,0	13	15	40		9	50	0,300
011.01.05000.5015	V2A 11/50	3,3	19	18	50		13	50	0,555
011.01.06000.5015	V2A 11/60	3,3	19	18	60		14	50	0,580

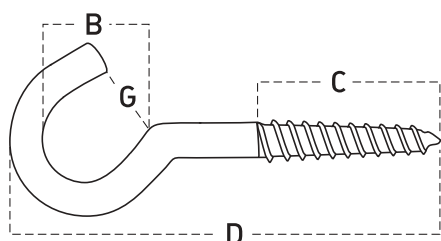
## 011 Gebogene Schraubhaken – mit Holzgewinde


Crochets d'armoires – filetage bois

Cup Hooks – wood thread

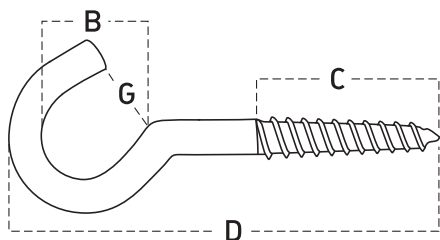


Code		∅ mm	B mm	C mm	D mm			G mm				kg 100
<b>Messing - Laiton - Brass</b>												
011.01.02000.2020	11M/20	2,0	6	0	20			4			100	0,110
011.01.02500.2020	11M/25	2,3	9	7	25			6			100	0,140
011.01.03000.2020	11M/30	2,6	10	11	30			6			100	0,190
011.01.04000.2020	11M/40	3,0	13	15	40			9			100	0,340
011.01.05000.2020	11M/50	3,3	19	18	50			13			100	0,530
011.01.06000.2020	11M/60	3,3	19	18	60			14			100	0,610



Code		∅ mm	B mm	C mm	D mm			G mm				kg 100
<b>kunststoffbeschichtet - plastifié - plastic coated</b>												
011.01.02500.3020	11K/25	2,3	9	7	25			6			100	0,145
011.01.03000.3020	11K/30	2,6	10	11	30			6			100	0,195
011.01.04000.3020	11K/40	3,0	13	15	40			9			100	0,325
011.01.05000.3020	11K/50	3,3	19	18	50			13			100	0,520
011.01.06000.3020	11K/60	3,3	19	18	60			14			100	0,605

**011 Gebogene Schraubhaken – mit Holzgewinde**  
**Crochets d'armoires – filetage bois**  
**Cup Hooks – wood thread**

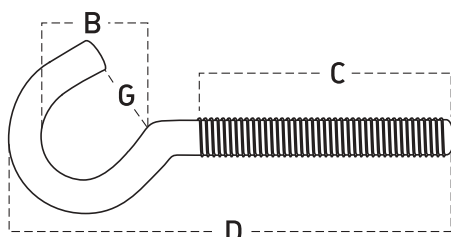



Code	Ø mm	B mm	C mm	D mm	G mm		kg
<b>rustikal - rustique - rustic</b>							
011.01.06000.4020	11R/60	5,0	60	18	31	20	100
							1,350

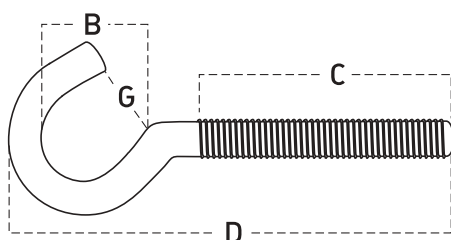
## 011E Gebogene Schraubhaken – mit metrischem Gewinde


### Crochets d'armoires – filetage métaux

### Cup Hooks – metric thread



Code		∅ mm	B mm	C mm	D mm			G mm				kg
<b>verzinkt - zingué - zinc plated</b>												
011.02.04004.1020	11E/M4x40	3,5	13	18	40			8			100	0,440
011.02.05004.1020	11E/M4x50	3,5	13	28	50			8			100	0,530
011.02.05005.1020	11E/M5x50	4,4	16	23	50			12			100	0,900
011.02.05006.1020	11E/M6x50	5,2	18	20	50			14			100	1,310
011.02.06005.1020	11E/M5x60	4,4	16	33	60			10			100	1,030
011.02.06006.1020	11E/M6x60	5,2	18	29	60			12			100	1,500
011.02.08008.1020	11E/M8x80	7,0	29	32	80			25			100	3,740

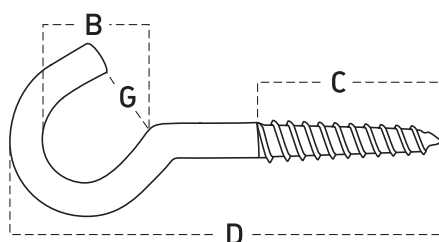



Code		∅ mm	B mm	C mm	D mm			G mm				kg
<b>rostfrei V2A - inox - stainless</b>												
011.02.06006.5015	V2A 11E/M6x60	5,2	17	30	60			13			50	1,500

## 013 Kronleuchterhaken – mit Holzgewinde

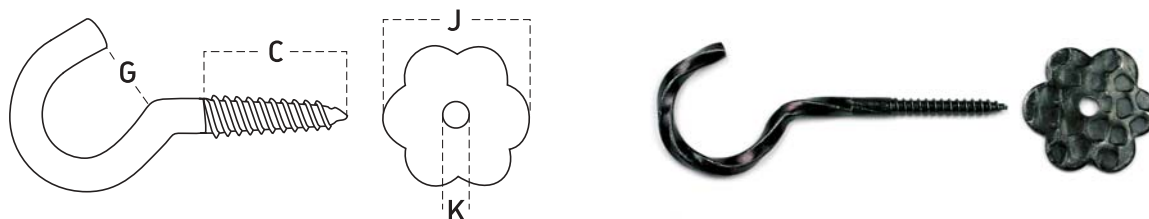
Crochets à lustre – filetage bois


Ceiling Hooks – wood thread



Code		Ø mm	B mm	C mm	D mm			G mm				kg
												100
<b>verzinkt - zingué - zinc plated</b>												
013.01.08000.1020	13/80	5,2	25	26	80			19			100	1,760
013.01.10000.1015	13/100	6,2	29	36	100			21			50	2,980
013.01.12000.1015	13/120	6,2	29	44	120			22			50	3,320
013.01.14000.1013	13/140	6,2	29	56	140			22			25	3,680
013.01.16000.1013	13/160	6,8	29	60	160			25			25	4,940
013.01.20000.1013	13/200	7,8	31	70	200			28			25	7,700

**014R Ampelhaken mit Rosette – mit Holzgewinde**  
**Crochets d'armoires avec rosace – filetage bois**  
**Plain Cup Hooks with Rosettes – wood thread**

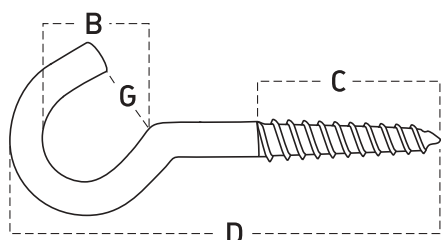



Code		Ø mm		C mm				G mm	J mm	K mm		kg 100
<b>rustikal schwarz - rustique noir - rustic black</b>												
014.01.10000.4013	14RS/100	5,5		35				20			25	4,015
014.00.04000.4013	Rosette	2,0							40	5,5	25	1,720
<b>rustikal altvermessingt zapponiert - rustique laitoné - rustic brass plated</b>												
014.01.10000.4113	14RG/100	5,5		35				20			25	4,015
014.00.04000.4113	Rosette	2,0							40	5,5	25	1,720

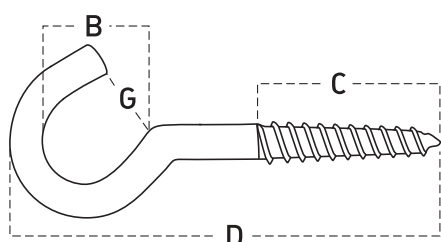
## 015 Wäscheleinenhaken – mit Holzgewinde


### Crochets pour cordes à linge – filetage bois

### Clothes Line Hooks – wood thread



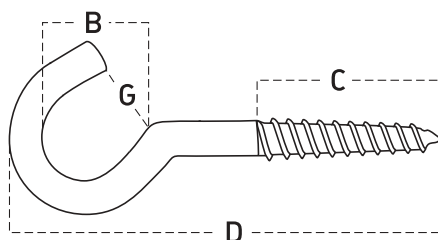
Code		∅ mm	B mm	C mm	D mm			G mm				kg 100
<b>verzinkt - zingué - zinc plated</b>												
015.01.05044.1020	15/50x4,4	4,4	16	17	50			13			100	0,810
015.01.06548.1020	15/65x4,8	4,8	23	22	65			18			100	1,280
015.01.08052.1020	15/80x5,2	5,2	25	26	80			19			100	1,770
015.01.08058.1015	15/80x5,8	5,8	25	26	80			20			50	2,240
015.01.09062.1015	15/90x6,2	6,2	29	31	90			23			50	2,860
015.01.10062.1015	15/100x6,2	6,2	35	28	100			24			50	2,960
015.01.10068.1015	15/100x6,8	6,8	29	29	100			24			50	3,540
015.01.12068.1015	15/120x6,8	6,8	29	42	120			24			50	4,200




Code		∅ mm	B mm	C mm	D mm			G mm				kg 100
<b>rostfrei V2A - inox - stainless</b>												
015.01.05000.5015	V2A 15/50	4,4	50	17	50			13			50	0,880
015.01.06500.5015	V2A 15/65	4,8	65	23	65			15			50	1,330
015.01.08000.5015	V2A 15/80	5,2	80	26	80			19			50	1,870
015.01.10000.5015	V2A 15/100	5,8	100	29	100			24			50	2,780
015.01.12000.5015	V2A 15/120	5,8	120	29	120			24			50	3,060

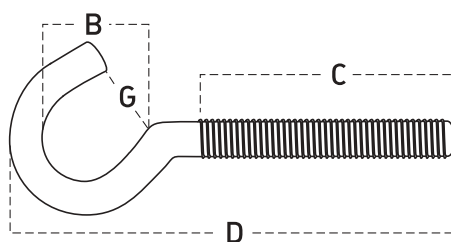



**015 Wäscheleinenhaken – mit Holzgewinde**  
**Crochets pour cordes à linge – filetage bois**  
**Clothes Line Hooks – wood thread**



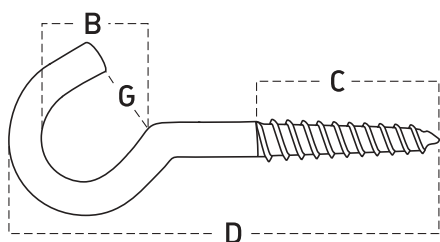
Code		∅ mm	B mm	C mm	D mm			G mm				kg
kunststoffbeschichtet - plastifié - plastic coated												
015.01.05000.3020	15K/50	4,4	16	17	50			13			100	0,845
015.01.06500.3020	15K/65	4,8	23	22	65			18			100	1,315
015.01.08000.3015	15K/80	5,2	25	26	80			19			50	1,820
015.01.10000.3015	15K/100	6,2	35	28	100			24			50	3,720

**015E Wäscheleinenhaken – mit metrischem Gewinde**  
**Crochets pour cordes à linge – filetage métaux**  
**Clothes Line Hooks – metric thread**



Code		∅ mm	B mm	C mm	D mm			G mm				kg
verzinkt - zingué - zinc plated												
015.02.10008.1015	15E/M8x100	7,0	29	42	100			25			50	4,840

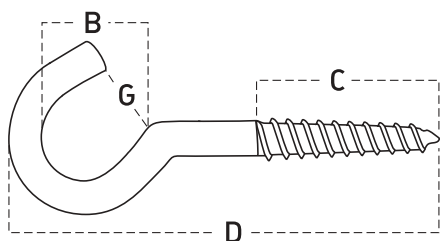
**017 Deckenhaken – eng gebogen – mit Holzgewinde**  
**Crochets d'armoires – avec petit oeil – filetage bois**  
**Ceiling Hooks – with small eye – wood thread**



Code	$\emptyset$ mm	B mm	C mm	D mm	G mm		kg 100
------	-------------------	---------	---------	---------	---------	--	-----------

**verzinkt - zingué - zinc plated**

017.01.05000.1020	17/50	4,0	15	20	50		100	0,690
017.01.06000.1020	17/60	4,0	16	20	60		100	0,810
017.01.07000.1020	17/70	4,0	16	25	70		100	0,900
017.01.08000.1020	17/80	4,0	16	25	80		100	1,000
017.01.10000.1020	17/100	4,0	16	25	100		100	1,220
017.01.12000.1020	17/120	4,4	16	45	120		100	1,720

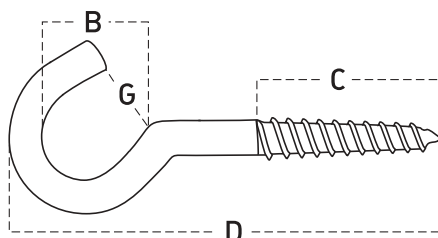


Code	$\emptyset$ mm	B mm	C mm	D mm	G mm		kg 100
------	-------------------	---------	---------	---------	---------	--	-----------

**rostfrei V2A - inox - stainless**

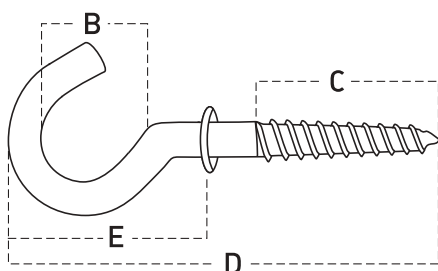
017.01.08000.5015	V2A 17/80	4,0	16	25	80		50	1,010
017.01.10000.5015	V2A 17/100	4,0	16	25	100		50	1,200
017.01.12000.5015	V2A 17/120	4,0	17	45	120		50	1,600

**017 Deckenhaken – eng gebogen – mit Holzgewinde**  
**Crochets d'armoires – avec petit oeil – filetage bois**  
**Ceiling Hooks – with small eye – wood thread**



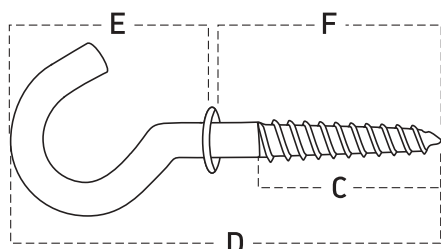
Code		∅ mm	B mm	C mm	D mm		G mm					kg 100
<b>rustikal - rustique - rustic</b>												
017.01.06000.4015	17R/60	5,0	14	20	60		8				50	1,190
017.01.07000.4015	17R/70	5,0	14	25	70		8				50	1,205
017.01.08000.4015	17R/80	5,0	14	30	80		8				50	1,320
017.01.10000.4015	17R/100	5,0	14	35	100		8				50	1,570

**066A Gebogene Schraubhaken mit gestauchter Befle – mit Holzgewinde**  
**Crochets à collerette – filetage bois**  
**Cup Hooks with Shoulder – wood thread**



Code		∅ mm	B mm	C mm	D mm	E mm						kg 100
<b>verzinkt - zingué - zinc plated</b>												
066.11.25000.1020	66A/25	2,3	9	8	25	17					100	0,140
066.11.35000.1020	66A/35	3,0	13	10	35	25					100	0,320
066.11.40000.1020	66A/40	3,3	14	12	40	30					100	0,510

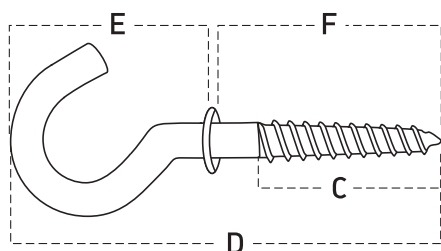
## 066 Gebogene Schraubhaken mit gestauchter Befle – mit Holzgewinde Crochets à collerette – filetage bois Cup Hooks with Shoulder – wood thread



Code	Ø mm	C mm	D mm	E mm	F mm							kg 100
------	---------	---------	---------	---------	---------	--	--	--	--	--	--	-----------

**verzinkt - zingué - zinc plated**

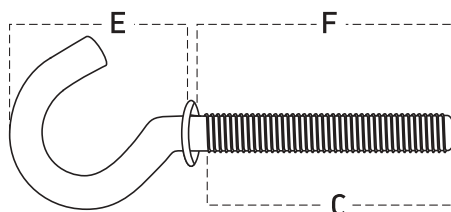
066.04.06635.1020	66/66x3,5	3,5			28	66	26	40				100	0,610
066.04.08444.1020	66/84x4,4	4,4			40	84	28	56				100	1,100
066.04.09758.1020	66/97x5,8	5,8			47	97	32	65				100	2,300



Code	Ø mm	C mm	D mm	E mm	F mm							kg 100
------	---------	---------	---------	---------	---------	--	--	--	--	--	--	-----------

**kunststoffbeschichtet - plastifié - plastic coated**

066.04.08444.3020	66K/84x4,4	4,4			40	84	28	56				100	1,150
-------------------	------------	-----	--	--	----	----	----	----	--	--	--	-----	-------

**066E Gebogene Schraubhaken mit gestauchter Befte – mit metrischem Gewinde**
**Crochets à collerette – filetage métaux**
**Cup Hooks with Shoulder – metric thread**


Code		Ø mm		C mm	E mm	F mm						kg 100
<b>verzinkt - zingué - zinc plated</b>												
066.02.03004.1020	66E/M4x30	3,5		28	30	30					100	0,660
066.02.04004.1020	66E/M4x40	3,5		38	30	40					100	0,730
066.02.04005.1020	66E/M5x40	4,4		38	31	40					100	1,200
066.02.05005.1020	66E/M5x50	4,4		48	31	50					100	1,310
066.02.06005.1020	66E/M5x60	4,4		58	31	60					100	1,430
066.02.04006.1020	66E/M6x40	5,2		38	32	40					100	1,695
066.02.05006.1020	66E/M6x50	5,2		48	32	50					100	1,855
066.02.06006.1020	66E/M6x60	5,2		58	32	60					100	2,015